

PT-6 Stealth Repeater / Base Station

For agencies that require compact P25 repeaters supporting transparent encryption in VHF, UHF, or 700/800 MHz bands, Procom's PT-6 provides a compact 30 Watt repeater/base station that is unobtrusive. The PT-6 30 Watt Stealth Repeater is specifically designed to meet the needs of surveillance operations where covert radio communications and rapid deployment are vital. The system can be configured as a repeater, a base station, or a repeater/base station combination.

Parameter	PT-6 Specification
Part Number	103-4510
Frequency Bands Supported	VHF, UHF, 700/800 MHz
Encryption Passed/Decode-Encode	All P25 types (e.g. AES or DES-OFB)
Size	6.7" H x 18.2" W x 13.4" D
Weight (fully equipped)	28 lbs. (12.7 kg)
Operating Temperature	-30°C to +60°C
Duplexer Separation	4.5 MHz - VHF 5 MHz - UHF
RF Output Power	20-30 Watts
Power/RF Connections	Optional internal or External Connectors
Power Source	110/220VAC External 12VDC power
Power Support	Optional Battery Case Optional Solar Kit



Standard accessories that come with the PT-6 include:

- Internal AC power supply with float charger for external battery connections
- Tactical headset for base station operations
- AC and DC power cables
- Black Case

Features Comparison with the Motorola PDR3500 Transportable Digital Repeater:

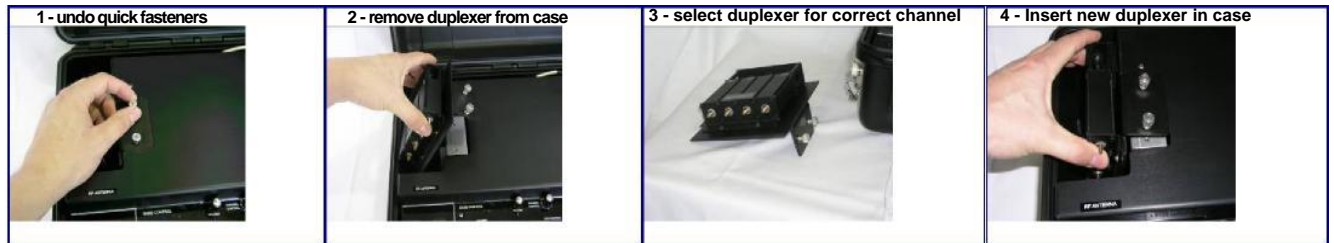
Feature	PDR	PT-6
Mode of Operation	Repeater or Base Station	Repeater and/or Base Station
P25 Compliant operation	Optional	Optional
Size	7.75" x 20" x 15"	6.7" x 18.2" x 13.4"
Weight (fully	46 lbs. (20.8 kg)	28 lbs. (12.7 kg)
Closed Case	Yes	Yes
Duty Cycle	50%	100% - Open-Lid 50% - Closed Lid
RF Output Power	30W Nominal – VHF 25W Nominal - UHF	30W Nominal – VHF 30W Nominal – UHF
Power Source	External AC External DC	External AC External DC
Crossband Capability	Yes	Yes
Hardware Configuration	Field Replaceable Units	Field Replaceable Units

PT-6 Stealth Repeater / Base Station

Features:

Quick-Swap Duplexers

The PT-6 provides swappable duplexer modules that easily allow a user or technician to change the operating channel of the repeater in the field by quickly swapping out the internal duplexer. An optional antenna relay kit may also be installed instead of a duplexer:



Flexible Control Panel

The PT-6 provides a simple, yet flexible, control interface that allows for a number of options for every possible situation you can encounter in the field:



Controls include:

- Speaker On/Off and Volume
- TX/RX Channel Selector Switch
- Encryption Enable/Disable Switch and "Clear Keys" Button
- Auxiliary Connector providing access to Balanced Audio, PTT, COR and Channel Select Lines
- System On/Off Switch
- Power, TX Activity and RX Activity LEDs